



QUARRY ACADEMY

Improving Processes. Instilling Expertise.



Mobile Crushing & Screening

Canyon Rock History

Canyon Rock Sonoma County California
Russian River Valley

Third generation , family Operated Since 1972

Principle One : Forestville, CA +/- 1.0 Million STPH

Cazdero Quarry : Green field Operation +/- 200k STPH

Located 10 miles Air and 20 miles road.

Material : Greywacke , Intermittent Clay seams

Support Existing Operation with Gabion and Stone As well as future
secure market area , material is mostly used in Santa Rosa Area.

Remain Cost Effective

Health and safety , as well as environmentally suited



Mobile Crushing & Screening

Canyon Rock History



Mobile Crushing & Screening

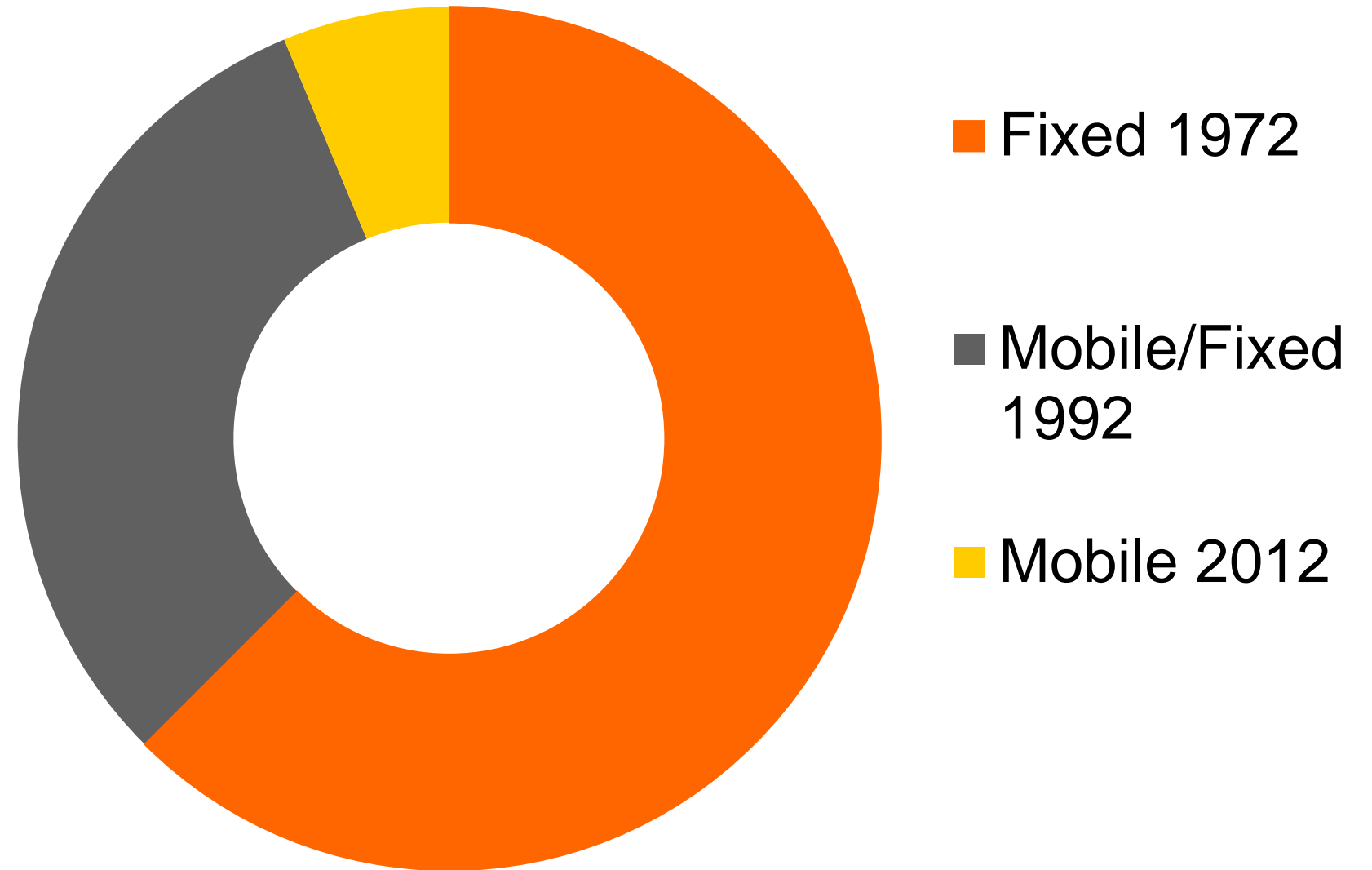
Canyon Rock Evolution 40 years

Operated Fixed for 20 years

Decided to expand in Contracting
added mobiles & recycle plant.

Decided to expand Beyond one operation

Plant Type



Mobile Crushing & Screening

Canyon Rock Pre-selection

Primary Large enough too Support existing facility & Future

Still mobile and self contained for Contracting Crushing

10,000 Hour plus design , Reliable , Robust

Pre-Screen Capability , Large side belt

Low fuel Consumption , Low In Operating costs

Large discharge Belt , with Magnet

Good service access & Service support

Rubber lined feeder for sound reduction

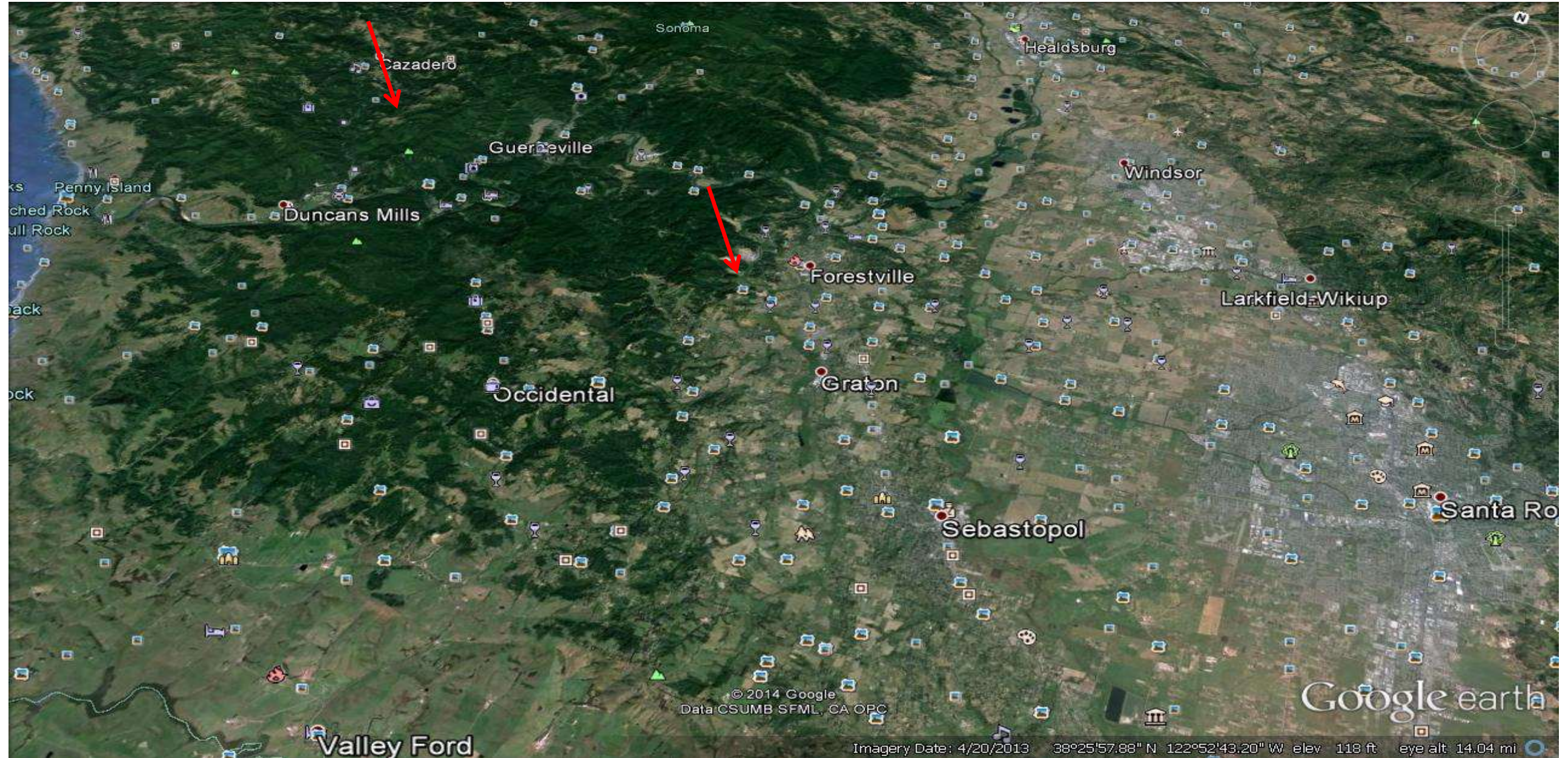
Smooth in operation , and Sound 106 Decibels

Fit Finish and overall quality

Dust suppression System Pre plumbed

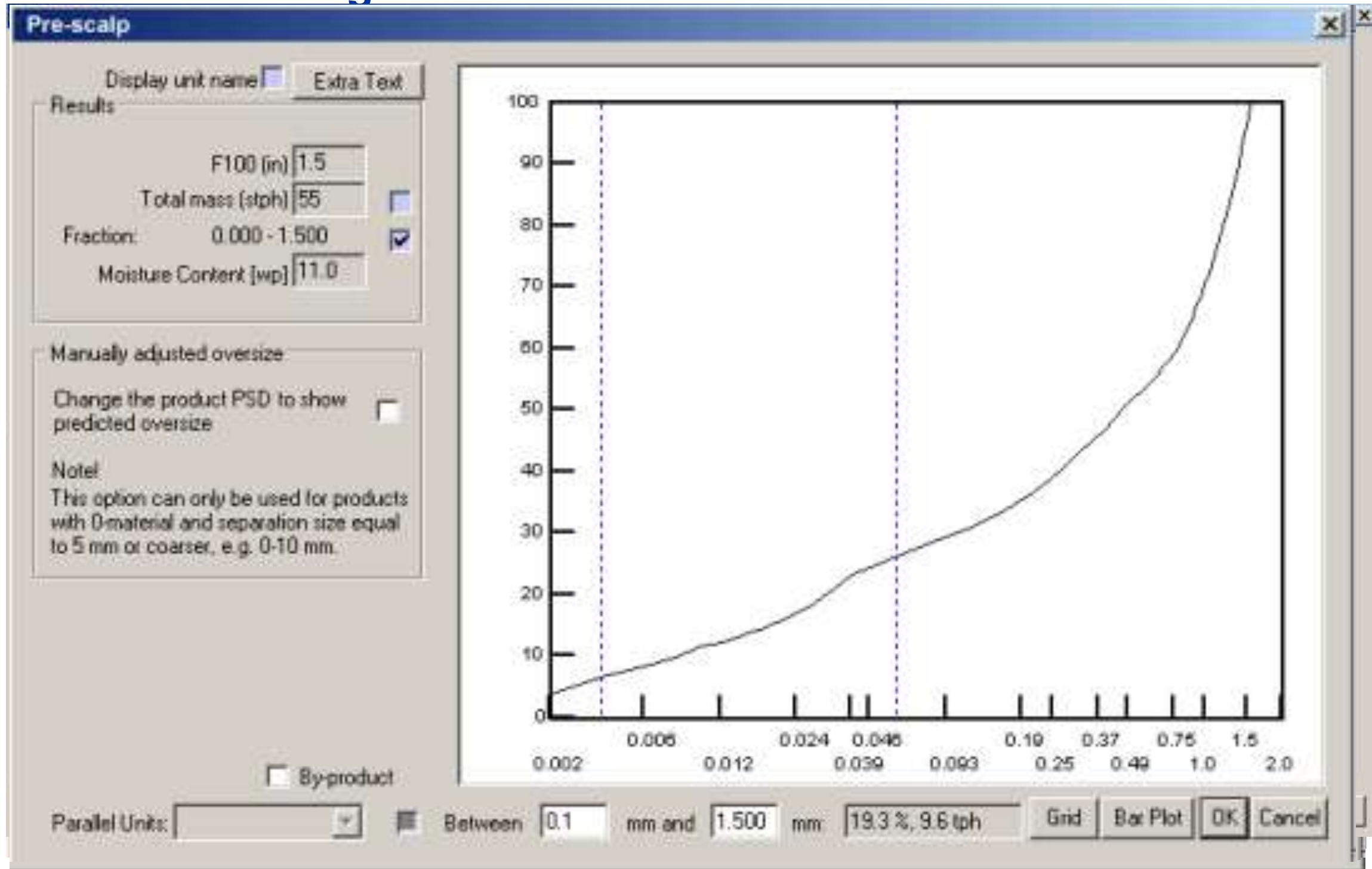


Mobile Crushing & Screening Canyon Rock Site



Mobile Crushing & Screening

Canyon Rock Flow Diagram



Mobile Crushing & Screening

Canyon Rock : Site Readings Sound

Challenges :

Heart of Cottage
Country

Resonance from High
wall

In between Mountains

On A River



Houses 53-61db

Roadway 57-63 db

Property 75-85 db

Scalp Plant 91-106 db

Jaw Plant 91-103 db

Trailer Loading 108 db

Changes :

Feeder liner , Truck
Loading

Mobile Crushing & Screening Canyon Rock Site Equipment

Sandvik UJ 440 Trend	950 K	6.0 GPH
Sandvik QE 440 Scalper Screen	350 K	4.1 GPH
Caterpillar 345 Excavator	550 K	11.0 GPH
Caterpillar 972 Loader	400 K	4.5 GPH
Power screen 65 Stacker	65 K	1.3 GPH
Other Cat 980	Occasional Use	
Total Fuel Burn 27.0 – 29.0 GPH @ 350-400 TPH		

Costs Gallon 4.00 X \$112.00 Hour or \$.35 Ton



Mobile Crushing & Screening

Canyon Rock Mobile Plant Advantages

Guaranteed availability at Forestville

Capability to expand product range

Self Contained , self powered , self controlled

Low investment Capital

Ability to expand beyond home market as required

Advantages over peak Power period

Capability to grow Or divest as needed



Mobile Crushing & Screening

Canyon Rock Costs Ton Comparison

	Canyon Rock					
Type	Track	Wheel	Static		Total	1400000
Plant Investment	\$ 1,465,000	\$ 1,485,000	\$ 1,385,000		Annual	200000
Investment Costs Ton	\$ 1.05	\$ 1.06	\$ 0.99		Hr rate	\$ 300.00
Annual Labor	2430	2304	2673		Shots	12
Mob Hrs Shot	12	24	64		Tons Shot	10000
Mob Costs	\$ 43,200	\$ 86,400	\$ 230,400		Tons hour	350
Mob Year	144	288	768		Shots year	10
Availability Mech.Hrs.	762	672	635		Track	75%
Labor Costs Total	\$ 729,000	\$ 691,200	\$ 801,900		wheel	85%
Labor Costs Ton	\$ 3.65	\$ 3.46	\$ 4.01		Static	90%
GPH	15	15	15		Track	762
Plant GPH	13	35	35		wheel	672
Total GPH	28	50	50		Static	635
Fuel Total	\$ 85,344	\$ 134,400	\$ 127,000		Cat C18	35 gph
Fuel Costs Ton	\$ 0.43	\$ 0.67	\$ 0.64		Fuel	\$ 4.00
Operating Costs	\$ 814,344	\$ 825,600	\$ 928,900		Track	13
Total Costs Per Ton	\$ 5.12	\$ 5.19	\$ 5.63		Other	35

Mobile Crushing & Screening

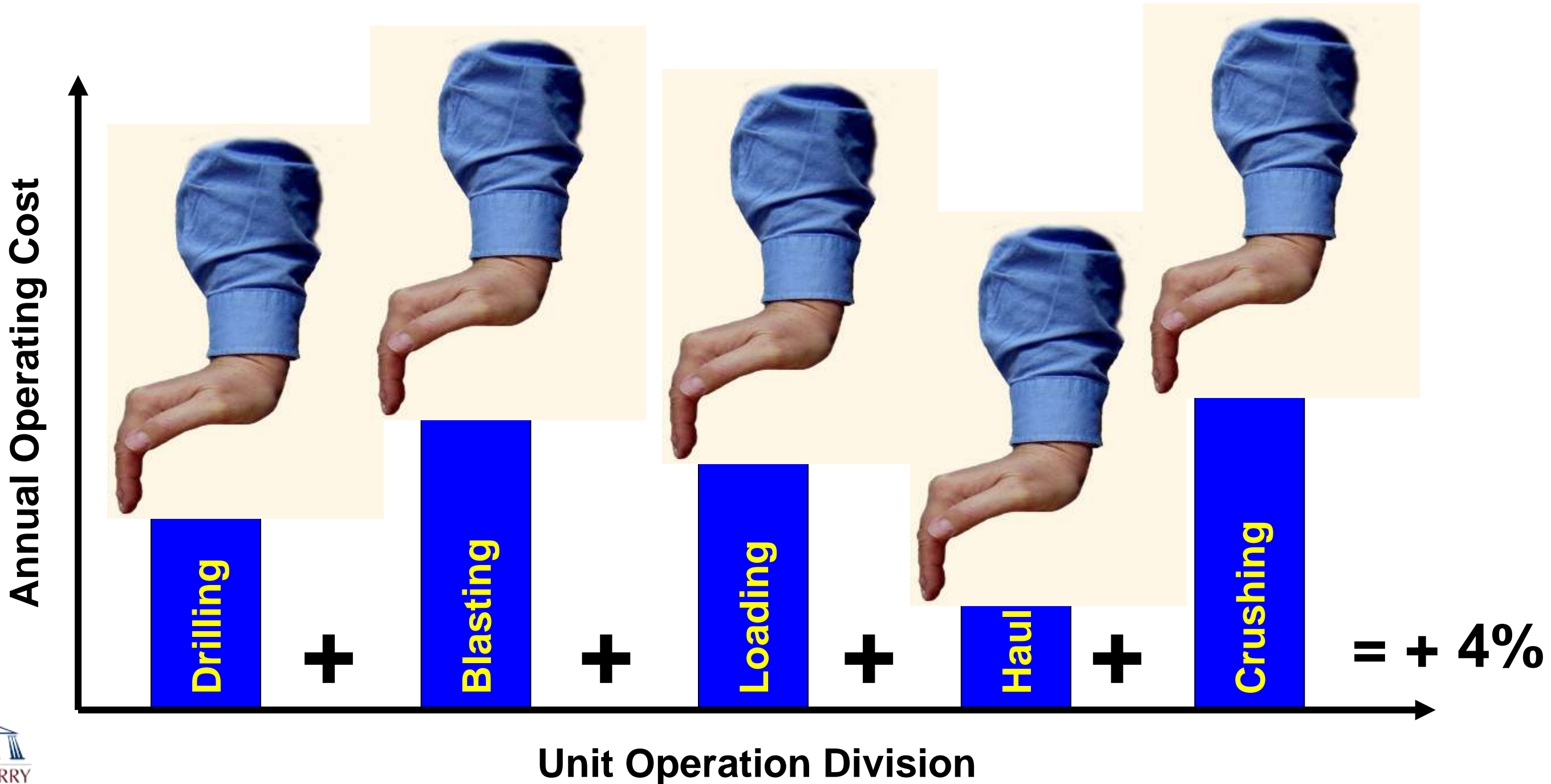
Canyon Rock Costs Ton Comparison

	Canyon Rock		
Type	Track	Wheel	Static
	10%		
Investment Costs Ton	1.05	1.06	0.99
Labor Costs Ton	3.65	3.46	4.01
Fuel Costs Ton	0.43	0.67	0.64
Total Costs Per Ton	5.12	5.19	5.63

Mobile Crushing & Screening

Canyon Rock Improvement Forward

Less is not always best



Mobile Crushing & Screening

TAKE AWAY from Canyon Rock

Research Look around and Have a Plan ! What ELSE !

Travel beyond your competition ! Lead do not follow !

Keep an open mind !

www.quarryacademy.com



Improving Processes. Instilling Expertise.

